

GOLF DIGEST NOMINATION 2021

CATEGORY:

RENOVATION / RESTORATION / REMODEL OF THE YEAR AWARD

PACKAGE FOR

PORT HOPE GOLF & COUNTRY CLUB AT PENRYN PARK

PREPARED BY:

JASON MILLER, GOLF COURSE ARCHITECT

MILLER GOLF DESIGN

103 Hillcrest Dr.

PO Box 308 Clarksburg, ON N0H 1J0

Office: (519) 599-6336 Cell: (519) 373-2384

millergolfdesign@rogers.com / jdwmiller60@gmail.com

FEBRUARY 19, 2021



GOLF DIGEST NOMINATION 2021

Category: RENOVATION / RESTORATION / REMODEL OF THE YEAR AWARD

PACKAGE FOR

**PORT HOPE GOLF & COUNTRY CLUB
AT PENRYN PARK**

TABLE OF CONTENTS

- 1) Overview / Background Information on the Property / Golf Course
- 2) Oldest Golf Course in Canada Report (from Golf Canada)
- 3) Historical Newspaper Articles and Quotes
 - i) Golf Club Meeting – President Mr. S.S. Smith Submitted Annual Report
- 4) Historical Photographs
 - i) The Original Golf Course – Clubhouse and view of the harbour (‘Golf Club House’)
 - ii) Golf Clubhouse
 - iii) ‘Harbor from Golf Links’
 - iv) ‘Golf Links’ Ladies playing one of the valley holes
Note the posts and fence surrounding the green
(to keep the sheep and goats off of the putting surface)
 - v) ‘View from Golf Links’
Looking up to the Idalia mansion
(prior to this mansion being used as a Clubhouse, at a later date)
- 5) The Golf Course Progression and the Golfing Lands
- 6) The 2021 Port Hope Golf and Country Club Layout
- 7) 2021 Scorecard
- 8) Golf Course Routing Plan Shot Analysis

GOLF DIGEST NOMINATION 2021
PORT HOPE GOLF & COUNTRY CLUB
AT PENRYN PARK

TABLE OF CONTENTS CONTINUED

9) Some Hole Descriptions and Renderings for the 2021 Opening

- i) Hole No. 2
- ii) Hole No. 6
- iii) Hole No. 9
- iv) Hole No. 18

10) The New Golf Course – Selected Photographs

Note: Obviously, the photos do not represent the Golf Course well, as they were not shot with this opportunity in mind.

It is best to come see, and play, the newly re-modelled golf course and see for yourself the new Port Hope Golf & Country Club.

GOLF DIGEST NOMINATION 2021

Category: **RENOVATION / RESTORATION / REMODEL OF THE YEAR AWARD**

PORT HOPE GOLF & COUNTRY CLUB AT PENRYN PARK

A REMODELED
18-HOLE GOLF COURSE

LOCATION: 82 VICTORIA STREET SOUTH, PORT HOPE, ONTARIO, CANADA

c/o MILLER GOLF DESIGN
Jason Miller
Golf Course Architect

email : millergolfdesign@rogers.com / jdwmiller60@gmail.com

103 Hillcrest Drive, P.O. Box 308, Clarksburg, Ontario, Canada N0H 1J0
Office: 519-599-6336 Cell: 519-373-2384

Website:	www.porthopegolf.ca
Golf Course Owner / Managing Partner:	Brad Smith 705-742-3801 email: bsmith@aoninc.com
Golf Course Superintendent:	Jeff Ayers 905-885-6487 email: phggreens@aoninc.com
Golf Course Architect/Developer:	Jason Miller Miller Golf Design & Golfshape 519-373-2384 (cell) 519-599-6336 (office)
Opening Date:	Spring 2021

PORT HOPE GOLF & COUNTRY CLUB

AT PENRYN PARK

BACKGROUND INFORMATION ON THE PROPERTY:

The history of the property where the present Port Hope Golf and Country Club is located, goes back to the mid 1800's. Penryn Park was built for one of Port Hope's most famous citizens – Colonel Arthur Trefusis Heneage Williams. His father, John Tucker Williams, came to Canada during the War of 1812 and later settled in Port Hope to become its first Mayor. Arthur T.H. Williams was born in Port Hope in 1837. Arthur attended Upper Canada Collee in Toronto and Edinburgh University in Scotland.

Like his father, he held many responsible positions in the town in addition to managing the family's business enterprises that included large land holdings and investments in timber and mines. His political career included being elected several times to the Ontario legislature from 1865 to 1875, and later holding the position of Conservative MP in Ottawa from 1878 to 1885.

A.T.H. Williams is best remembered for his military career. He was Colonel of the 46th Regiment and saw service during the Fenian Invasion. As Commander of the Midland battalion during the Riel rebellion of 1885, he led a daring charge against the Metis that resulted in victory at Batoche, Saskatchewan. Williams was acclaimed as the "Hero of Batoche". Before he could return to Port Hope victorious, he died suddenly of pneumonia. In 1889, Sir John A. MacDonald unveiled a statue in his memory placed in front of Town Hall. (56 Queen Street).

After his marriage to Emily Seymour in 1859, Colonel A.T.H. Williams commissioned architect Edward Haycock to design his house named Penryn Park on the vast acreage adjacent to his father's house, Penryn Homestead (82 Victoria Street).

Penryn Homestead and Penryn Park were named after the area where John Tucker Williams was born in Cornwall, England.

After the death of A.T.H. Williams in 1885 (his wife Emily had died in 1882), the house was sold to Henry H. King, an American lawyer from Pittsburgh who had extensive real estate and business holdings. He became aware of the Port Hope area as one of the many Americans who spent their summers in the area. He purchased Penryn Park as his summer residence. In the 1880's, the land was used as a sports field for events like football and rugby and as a private club and restaurant and the grounds were used as a golf course. A Billiard house was added in 1900. All of these buildings still exist today. The Mansion is used for Golf Club events and weddings, and is a backdrop for many movies and television shows.

THE GOLF COURSE:

The original golf course was laid out below the Penryn Park Mansion, and was played through and over the deep valley and hillsides. It was played for 10 – 15 years, before Mr. George Cumming made “considerable changes” and re-routed the golf course, “by which the heavy hill climbing has been avoided, and the course has been made easier to walk over without reducing the difficulties of the play which remains ‘sporty’ and attractive.”

See the historical photos attached. Note the ladies playing in the valley, with the green protected by wire to keep the sheep and goats off the putting surface.

The original golf course was quite the development. Besides the golf course and the magnificent views of Lake Ontario, the Clubhouse overlooked the lake and harbour, and the Club was well established with Presidents, Secretary-Treasurers, Executive Committees, Grounds Committees, and a healthy membership.

Other than a few original greens from the early routings, we have not found a plan detailing the golf course layout at that time. As mentioned in some early newspaper articles, this 'golf links' was one of the finest in Canada at the time, and hosted many golfing events. As discussed, the golf course was re-routed by Mr. George Cumming, a Scottish born golf professional (from the Toronto Golf Club, est. 1876) who won the Canadian Open in 1905. It was one of many clubs he assisted in the field of golf course architecture. Unfortunately, we have not found any details of this early golf course routing yet, either.

The new Port Hope Golf and Country Club is a tribute to that bygone era, both in golf course design and the desire to highlight the views of Lake Ontario. This style of golf design focuses on the visual strategy, and the landscape that makes up the golf course, including the prominent views. The golf course is full of thought-provoking ridges and valleys that both tempt you or confuse you, but where the ultimate goal is to capture the simplicity of this natural landscape, and incorporate it into the golf course. These landforms and the subsequent golf features may be quite subtle or very bold, but it is Lake Ontario that commands the most attention. Whether it is this view or the ever-present winds, it is this aspect of the property that provides the backdrop to the early days of golf in Canada.

The first golf course expansion took place in 1993-95, expanding the Golf Club to 18 holes. See the accompanying drawing showing the property expansion parcels. This routing continued through 2005, and beyond, as the first phase of the Port Hope Golf and Country Club re-development then began in 2006, with the creation of three new golf holes around the large stormwater management pond proposed for Phase One of the residential development. The design called for a very large stormwater capacity capable of handling a 100 year storm event. This was designed to accommodate that requirement, but in doing so also allowed a large wetland complex to be constructed between the tri-fecta of golf holes. The combination included a driveable and very strategic par 4, a par 3 over water and a long rolling par 5 to a difficult green site (which was originally going to be the 18th, with a new clubhouse overlooking this green site). These three new holes were challenging to all who played them, and expanded the Golf Club to 21 holes. (This was something you saw in the early days of golf, when golf courses were 6, 9, 12, 15, 18, 22 holes depending upon the land available, the Club, etc.)

The newly remodelled golf course was recently built over a number of years, starting in 2017 with a tree removal program to open up new shot lines, reduce the shade from the existing and remaining trees and at the same time improve the quality of the turfgrass, but especially to open up the views of Lake Ontario, as it was originally more than 100 years ago.

Wider fairways now make Port Hope Golf and Country Club more player friendly, a goal set by the Ownership which also included softening of some slopes, expanding greens, and redirecting the overall bunker area and locations.

The drainage system was expanded, and the irrigation system was updated to a new automated system with better control and coverage. Water is now sourced from Lake Ontario, and feeds our pond system.

The opening hole plays from the old Clubhouse / Pro-Shop, and is a mid-length par 3, which both sets the pace of play and the challenge that lies ahead. It faces directly into the lake. Straight will get you everywhere on this golf course... and avoid the pits and pitfalls found along the fringes of each hole, be it a large natural hillside drop off, a railroad track (or 4), a pond or wetland, a sandy bunker, or the steep cliffs of Lake Ontario!

A Straight-talking strategic golf course, yet balanced with more fun than challenge (of which there is still plenty), and where you will thoroughly enjoy the breezes and the stunning views, and the traditional game of golf !

The front nine consists of three holes north of the railroad track complex (x4) requiring both strategy and precision, beginning with the first tee shot to a green set on top of a knoll, with Lake Ontario as the backdrop, followed by the second which runs along the railroad. It rings back to the days of the great British Golf Courses, set hard against the railroad, which typically brought the early golfers to 'Golf' hotels and 'links' golf destinations. Think of Royal Troon, the Carnoustie Golf Links and the Cruden Bay Golf Club.

The 3rd hole is part of the 2006 expansion, and plays beside the railroad and the wetland complex. This short par 4 offers many options that the golfer must decide before playing.

The 3 holes from the 2006 expansion remain the same, while the 8 other golf holes were remodelled to blend into the new design style, and take advantage of the topography that was part of the original golf course, or 1993/95 golf course expansion. Tees were added / expanded at both

ends of existing tee deck complexes, on the remaining 18 hole golf course holes, so that they provide more challenge for the lower handicapper, but more importantly, the forward tees were designed to provide a fairer option and increase participation from a wider range of golfer. This tee deck expansion was also part of the overall new golf course design, resulting in 18 holes that can be played from an exciting 6385 yards, down to a fun-filled 4253 yards. Par is now 70 or 71.

The 7 new holes found south of the railroad include holes 4 through 10, and were designed to maximize the views of the Lake. This can be seen as one crosses over the 220 foot clear span bridge, set 60 feet above the 4 railway lines, allowing for some breath-taking views (and photo opportunities). Six of these holes play along the shoreline of Lake Ontario, with four greens set as close to the lake as possible, challenging the golfer both strategically and visually, but with features to balance the winds, the slopes and the visual distractions that these views create for the golfer.

Holes 13 through 17 were re-modelled with new tee decks on each and every hole, adding some length, angle and challenge to all. Hole No. 18 is an entirely new hole, now playing down the entire valley, with the Penryn Park Mansion overlooking this hole.

The views of Lake Ontario have taken this golf course back to its origins, where the view was paramount.

The parkland-style greens can still be found on the finishing holes (14 – 18), utilizing the lands that were used for the original golf course layout, and played on, as far back as 1894. (See photos of some of these original golfers attached. Note the ladies and their caddies.)

The spectacular views that they originally saw are now the same views brought back to this new re-model of one of the original 20 golf courses developed in Canada.

The following ‘Oldest Golf Courses of Canada’ chart shows the timeline for golf course development in Canada (from GOLF CANADA – 2017 Canadian Golf Course History).

The new (and re-modeled) greens were designed to flow naturally into their surroundings, creating greens complexes that tied to a variety of natural features, including false faces and roll-offs, or to bunkers that tend to gather, while others may help the golfer avoid a worse fate. The greens complexes tie these greens to the natural features of this unique and varied topography along this lake-side property. A balance between the visual and the playability was important, and the desire that these greens be fair, and just as importantly, be fun to play.

Most new greens are modest in proportion, in order to seamlessly blend into the golf course, and some of the greens were to remain untouched from the previous layout as we found them. Overall, eight new greens and three expanded greens join the three greens built in 2006, and the four greens that remain from the golf course prior to this remodelling project started in 2018.

Noting that the ‘fun’ factor of these greens was to be paramount, there is a subtleness to the contours, allowing the slope of the green surface to take precedence over the contours found within some of the green sites.

Remembering that these greens are the heart of the golf course, it is nice to reflect on the pleasure they can bring, both visually and through play.

This Golf Course re-modelling project has been very exciting to work on, and rewarding as well.

We are one of only 5 golf courses located on Lake Ontario, within Ontario, Canada. Of the 5, Port Hope Golf & Country Club has the most golf holes located on the water's edge (9) and definitely with the most views of the lake, as all 18 holes can view the lake from some vantage point.

The Owners envisioned a new golf course that expanded on the history of golf, and the history of this property. They also wished for a 'fun' golf course that could be enjoyed by all who played it. We believe they now have this, and more. It is exciting to look forward to 2021, a new Clubhouse location, overlooking the 1st and 18th holes (in one the of older homes on the property) and the pleasure of seeing this property bring back the character and history that was once unique and full of vision, with a great future.

Jason Miller
Golf Course Architect
Miller Golf Design

OLDEST GOLF COURSES IN CANADA

(from GOLF CANADA – 2017 Canadian Golf Course History)



Prepared For: Port Hope Golf & Country Club

Prepared By: Jason Miller

Miller Golf Design Group Inc.

Date: January 2021

OLDEST GOLF COURSES IN CANADA

(from GOLF CANADA – 2017 Canadian Golf Course History)

Port Hope Golf & Country Club was one of the first 23 Golf Courses built in Canada.

* Still Operating

** Still Operating on Original Site

	DATE	*/**	GOLF COURSE	
1.	1873	*	Montreal, QC	(1884 = Royal Montreal Golf Club)
2.	1874	**	Royal Quebec, QC	
3.	1875	**	Niagara-On-The-Lake, ON	(based on NOLGCC Information)
4.	1876	*	Toronto Golf Club, ON	(1876-1911) (1911-Present)
5.	1879	**	Brantford, ON	
6.	1885	**	London Hunt Club, ON	
7.	1887		Kingston, ON	(1887-1926)
8.	1889		Beacon Hill, ON	(1889-1896)
9.	1890	**	Perth, ON	
10.		**	Yarmouth Links, NS	
11.		**	Fort MacLeod, AB	
12.	1891	**	Royal Ottawa, ON	
13.	1892	**	Virden Wellview, MB	
14.			Vancouver, BC	(1892-1895) (1895-1896) (1896-1899)
15.	1893	**	Rosedale, ON	
16.			Deer Park, ON	(1893-1894)
17.		**	Victoria, BC	
<i>In 1893, only 12 of these 17 Golf Courses were still active / 11 on original site.</i>				
18.	1894	**	<i>Port Hope Golf & Country Club, ON</i>	
19.		*	Hamilton Golf & Country Club, ON	(1894-1896) (1896-1913) (1914-Present)
20.		**	Murray Bay, QC	
21.		*	Algonquin, NB	(1894-1895) (1895-Present)
22.			Winnipeg, MB	(1894-1894) (1895-1913) (1914-1948)
23.			New Westminster, BC	(1894-1907)
<i>In 1894, 6 new Golf Courses were built in Canada, 4 of which are still operating today.</i>				

	DATE	*/**	GOLF COURSE	
24.	1895		Glenview, ON	(1895-1921)
25.			London, ON	(1895-1904)
26.		*	Simcoe, ON	(1895-1910) (1910-Present)
27.			Toronto Lacrosse & AA, ON	(1895-1896)
28.			Cobourg, ON	(1895-1898) (1898-1914)
29.			Sydney, NS	(1895-1908)
30.	1896		High Park, ON	(1896-1906)
31.		**	Cornwall, ON	
32.		**	Metropolitan, QC	
33.			Halifax, NS	(1896-1900)
34.			Edmonton, AB	(1896-1912)
35.	1897		Bishops University, ON	(1897-1902) + 4 changes = Old Lennoxville Golf Course (1976 – Present)
36.			Spadina, ON	(1897-1902)
37.		**	The Toronto Hunt, ON	
38.			University of Toronto Golf Club, ON	(1897-1903)
39.		*	Peterborough, ON	(1897-1897) (1897-1898) (1898-Present)
40.		**	Napanee, ON	
41.		**	Cacouna, QC	
42.			Saint John, NB	(1897-1911)
43.			Fredericton, NB	(1897-1916)
44.			Calgary, AB	(1897-1902) (1902-1906) (1906-1909)
45.	1898		Acton, ON	(1898-1905)
46.			Carlton, ON	(1898-1900)
47.		**	Woodstock, NB	

By 1898 only 24 of these 47 original Golf Courses were still active / 19 on original sites, including Port Hope Golf & Country Club.

OLDEST GOLF COURSES IN ONTARIO

By 1894, there were only 12 Golf Courses in Ontario, 7 still operating on their original site, including Port Hope Golf & Country Club.

* Still Operating

** Still Operating on Original Site

	DATE	*/**	GOLF COURSE	
1.	1875	**	Niagara-On-The-Lake, ON	(based on NOLGCC Information)
2.	1876	*	Toronto Golf Club, ON	(1876-1911) (1911-Present)
3.	1879	**	Brantford, ON	
4.	1885	**	London Hunt Club, ON	
5.	1887		Kingston, ON	(1887-1926)
6.	1889		Beacon Hill, ON	(1889-1896)
7.	1890	**	Perth, ON	
8.	1891	**	Royal Ottawa, ON	
9.	1893	**	Rosedale, ON	
10.	1893		Deer Park, ON	(1893-1894)
11.	1894	**	<i>Port Hope Golf & Country Club, ON</i>	
12.	1894	*	Hamilton Golf & Country Club, ON	(1894-1896) (1896-1913) (1914-Present)

GOLF COURSES ON LAKE ONTARIO

After 148 years of Golf Development in Canada, and 146 years in Ontario, there are only 5 Golf Courses located on Lake Ontario and have golf that plays to the waters edge.

	DATE	GOLF COURSE	Total Number of Holes	Number of Holes on the Lake	Additional Holes with View of Lake	
1.	1875	Niagara-On-The-Lake, ON	9	6	1	(year established is based on NOLGCC Information)
2.	1894	<i>Port Hope Golf & Country Club, ON</i>	<i>18</i>	<i>9</i>	<i>9</i>	<i>All holes playing adjacent to the lake, or with views of the lake</i>
3.	1897	The Toronto Hunt, ON	9	3	2	
4.	1923	Burlington Golf & Country Club, ON	18	2	3-6	Now on Hamilton Harbour
5.	1984	Wilmot Creek Community Golf Club, ON	9	4	0	

HISTORICAL NEWSPAPER ARTICLES AND QUOTES

- 1880 THE GAZETTE, NOVEMBER 4, 1880
Penryn Park – Athletic Field
- 1899 THE GLOBE, OCTOBER 25, 1899
Port Hope Golf Club (Annual Meeting) – Situated on the grounds of Mr. H. H. King, ‘Penryn Park’ - Quote:
“The links are situated on the beautiful grounds of Mr. H. H. King “Penryn Park” who courteously places them at the club’s disposal. Challenges are to be sent out for next season, when it is hoped many visiting teams will play on the finest links in Canada.”
- 1900 THE GLOBE, JULY 3, 1900
Port Hope Golf Club - Quote:
“PORT HOPE LADIES WIN”
“At 10 a.m. yesterday the first foreign match of the Port Hope Golf Club took place on links said to be the finest in Canada.”
(Match was against Peterboro’ / Port Hope wins 14-1)
- 1900 THE TORONTO DAILY STAR, NOVEMBER 7, 1900
Port Hope Golf Club – Officers elected (Hon. President H.H. King)
- 1902 THE GLOBE, JUNE 21, 1902
Port Hope Golf Club – Quote:
‘A match was played over the Port Hope golf links on Tuesday the 17th inst. between the Peterboro’ and Port Hope ladies’ teams, resulting in a win for Port Hope.’

‘The pretty clubhouse was gay with flowers, and, owing to the clearness of the day and the deep blue of the lake, the beautiful view from the verandah was seen at its best.’

1902 THE TORONTO DAILY STAR, AUGUST 29, 1902

Port Hope Golf Club played a match with the Spadina Golf Club
(Spadina winning by 14 Holes).

1903 THE TORONTO DAILY STAR, SEPTEMBER 18, 1903

Port Hope Golf Club member T.S. Peplar played in the Championship of
the Dominion at the Toronto Golf Club, losing his first round match 3 & 2
to a Toronto Golf Club member (T.D. Law).

1909 DECEMBER, 1909

Port Hope Golf Club and Country Club, Limited - Quote

*“An unusually long list of industrial companies have been incorporated
during the past week, according to the Ontario Gazette. They are as
follows: Port Hope Golf Club and Country Club, Limited, share capital
\$10,000”*

1911 SEPTEMBER 22, 1911

THE PORT HOPE EVENING GUIDE

GOLF CLUB MEETING

PRESIDENT S.S. SMITH SUBMITTED ANNUAL REPORT

i) The President Mr. S.S. Smith submitted the following interesting report. –

At the last Annual Meeting of the Shareholders, it was announced that in furtherance of the necessities and desires of the members, a purchase, of the new Links had been made, and that it was the intention of the Directors to remove the Club House to the new premises. This was safely accomplished during last winter at a cost of some \$285.00 and during the present season considerable improvements have been made to the House. The verandah has been extended around the house, a shower bathroom, completed downstairs, and drain constructed from the lavatories. The whole outside woodwork has been painted with a

very pretty and satisfactory effect, the fences surrounding the links have been put in first class condition.

Much labour and work was expended on the new links last fall and this season and the directors are very much pleased with the condition of the links, both greens and fair greens, considering the excessive dryness of the present season.

Under the advice of Mr. Cuming, the Professional of the Toronto Golf Club, considerable changes have been made in the course as at first laid out, by which the heavy hill climbing has been avoided, and the course has been made easier to walk over without reducing the difficulties of the play which remains “sporty” and attractive.

NOTE: George Cuming was a Canadian Open Winner in 1905, and was involved in other golf course architecture projects, including Mississauga Golf & Country Club, Idylwyld Golf and Country Club in Sudbury, Scarboro Golf and Country Club, Sarnia Golf and Curling Club and he partnered with Melville Millar and designed the front nine of Port Colborne Golf Course in 1929.

Satisfactory arrangements were made with the Seymour Electric Power Company, by which the club received \$250, for permitting the Power Co. to erect its power line along the southern boundary of the links. The directors however call the attention of the players and members to the fact, that at times there is danger in coming in contact with the poles erected, and notices have been posted on the poles warning persons to keep away from them.

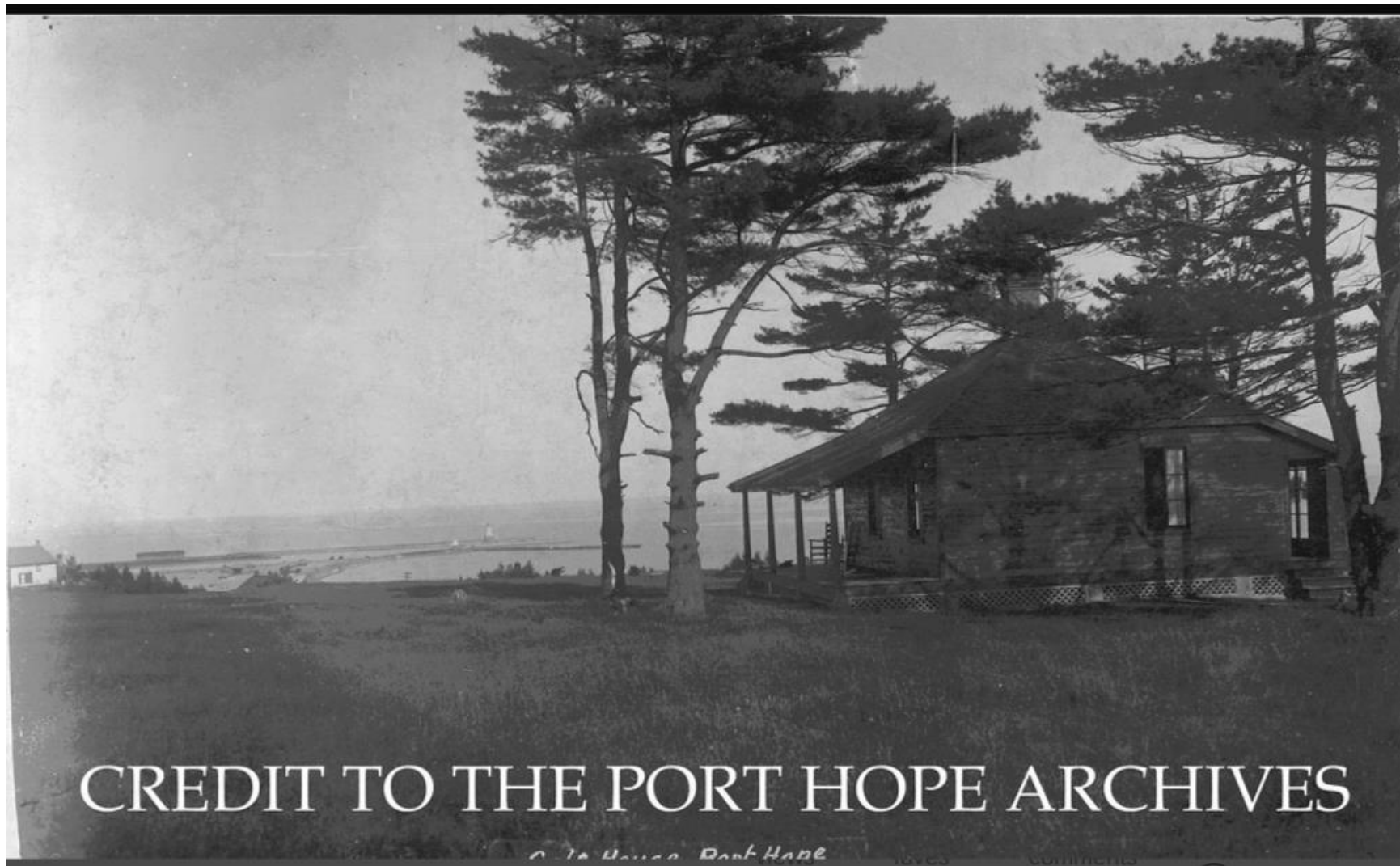
A contract was made with a firm of Tinsmiths in the town to carry a line water pipes from the corner of Bedford and Pine streets to the club house, which has been satisfactorily performed at a cost of \$350, including lavatories etc.

The directors take great pleasure in giving to the shareholders the above particulars of their work on behalf of the club, and feel that they can congratulate the club on the possession of a very valuable Golf Links, and property, which in time will be one of the best in any part of Canada, outside of the large cities, and which will always be a very valuable asset to the Town.

Your directors feel justified in saying that the links as a whole are now in such a satisfactory condition, that there is no longer any reason for our members retraining from using them to the fullest extent. All of which is respectfully submitted.

Note: With research from:

1. Golf Canada
Meggan Gardner, Director, Heritage Services
2. Port Hope Archives
3. Miller Golf Design Research Team

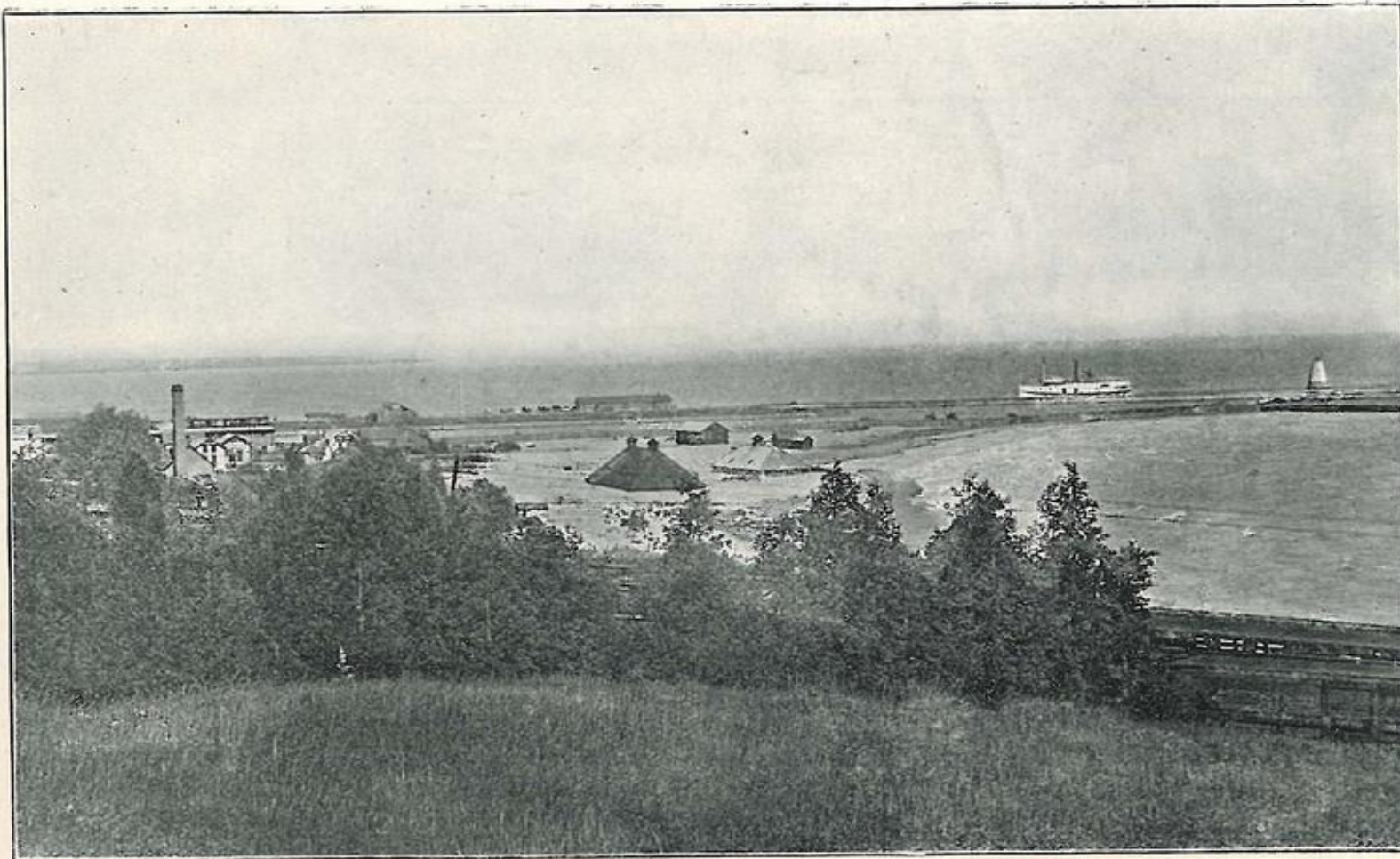


i) The Original Golf Course – Clubhouse and view of the harbour (‘Golf Club House’)

CREDIT TO THE PORT HOPE ARCHIVES



ii) Golf Clubhouse



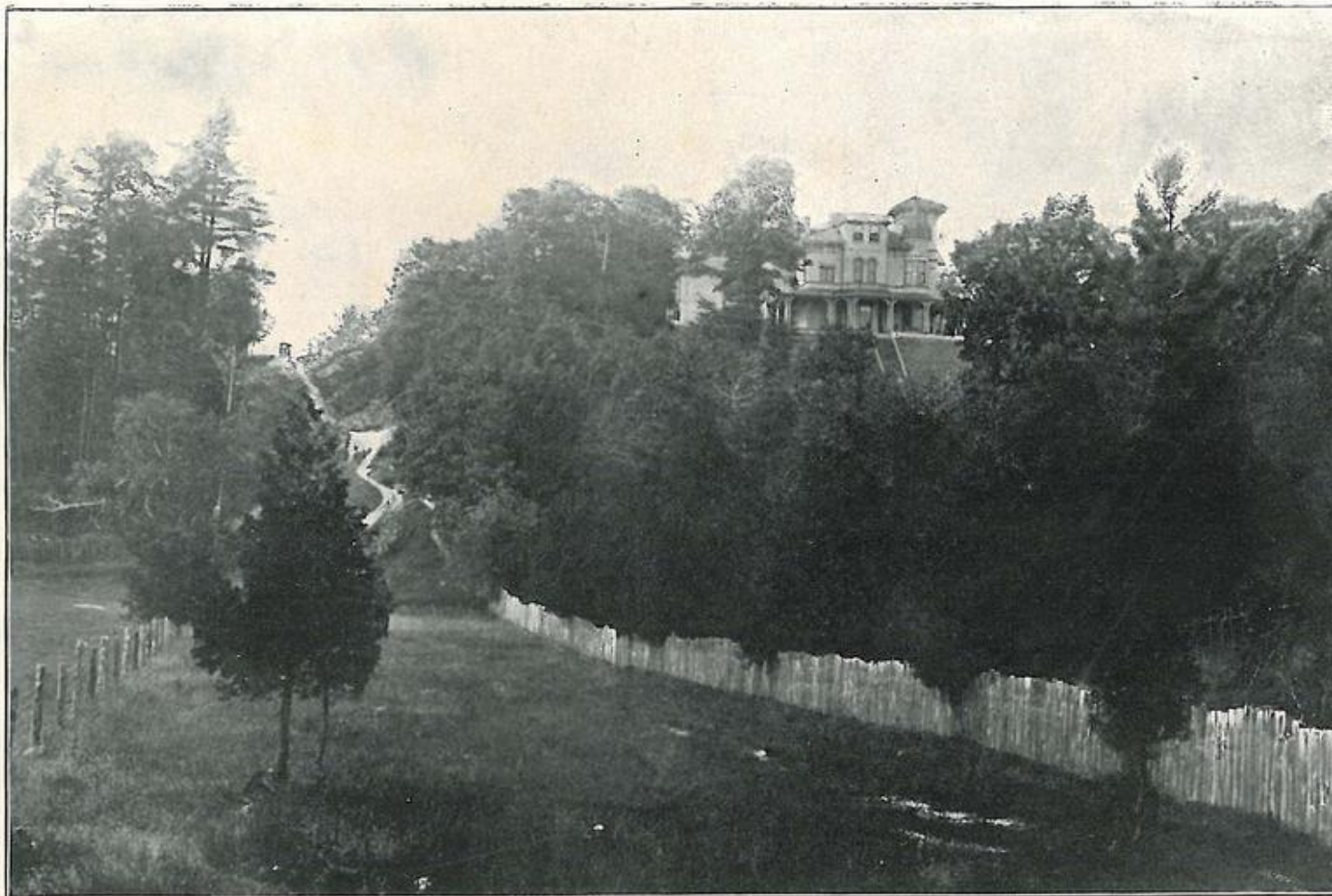
HARBOR FROM GOLF LINKS

iii) 'Harbor from Golf Links'



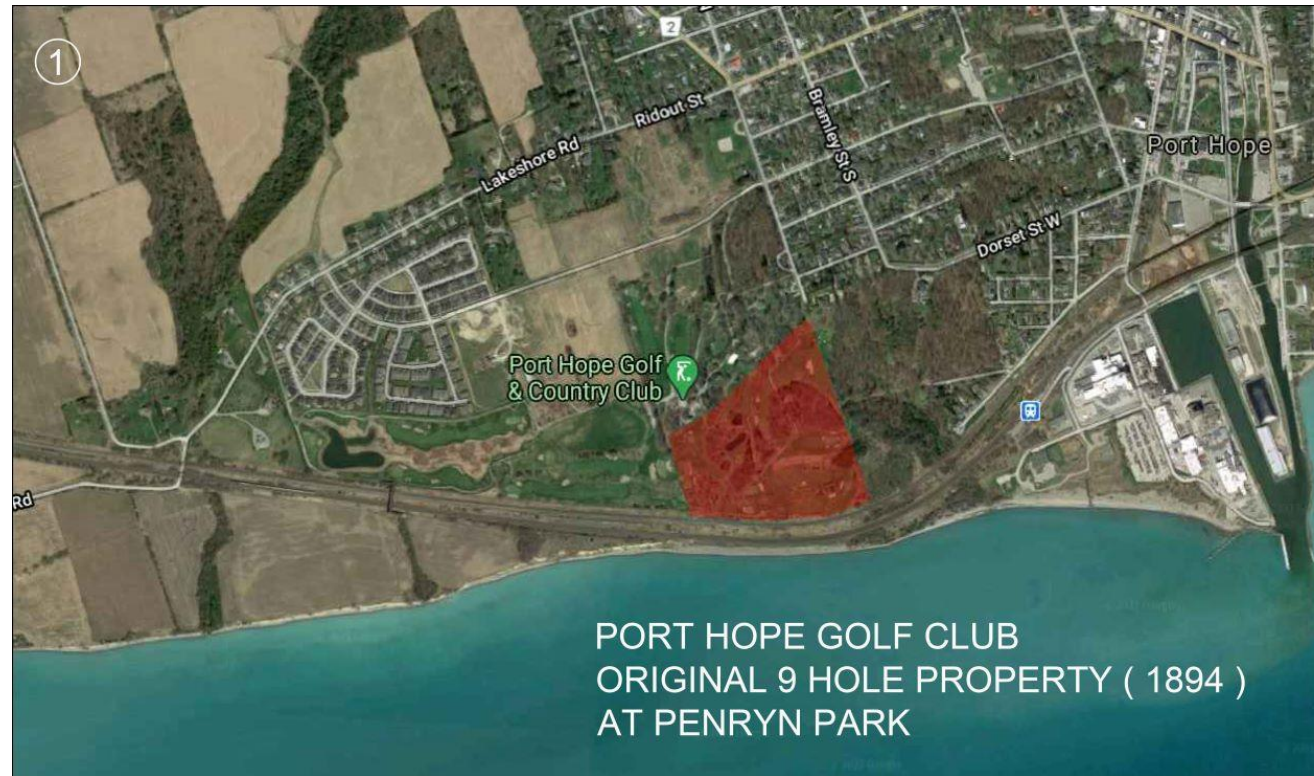
CREDIT TO THE PORT HOPE ARCHIVES

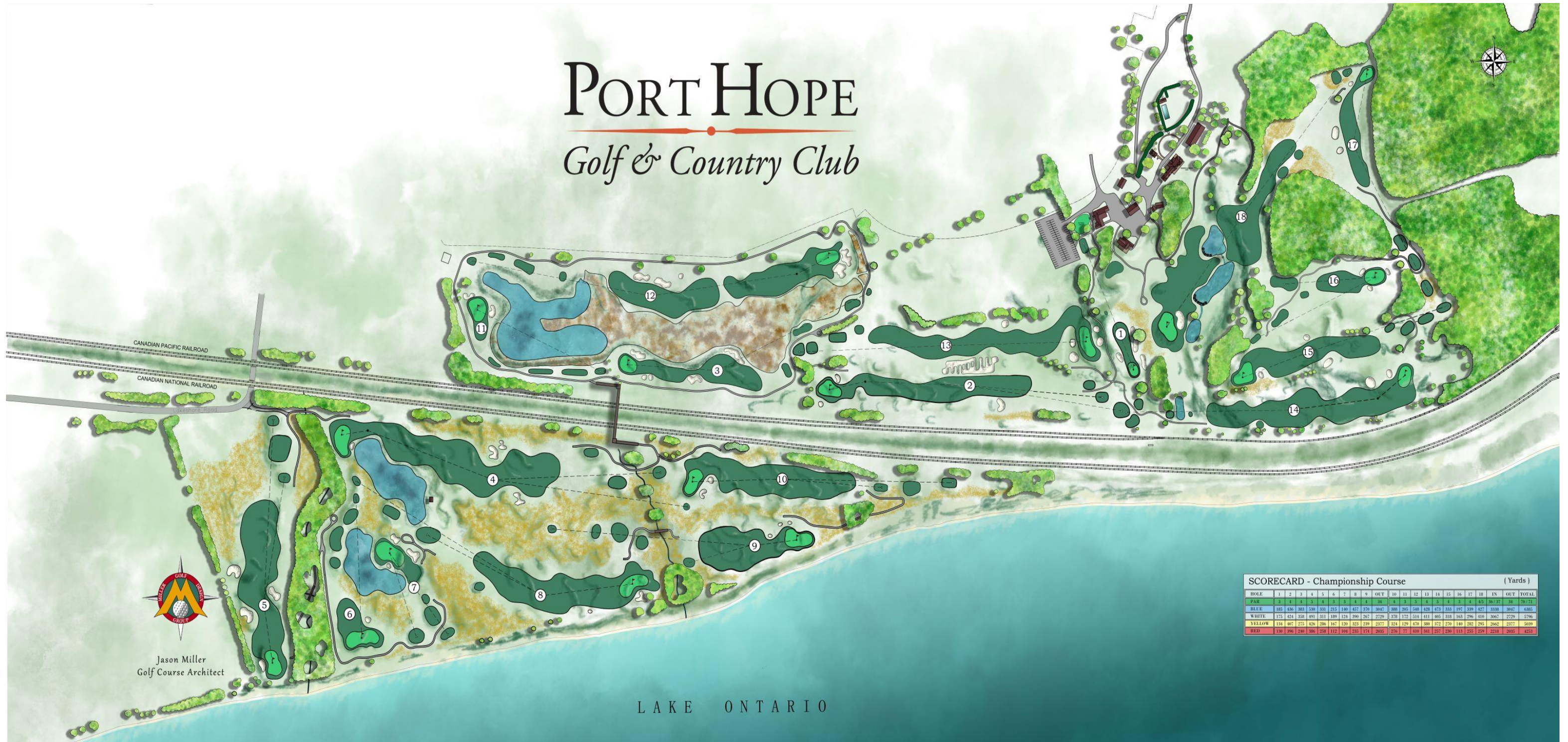
iv) 'Golf Links' Ladies playing one of the valley holes. Note the posts and fence surrounding the green (to keep the sheep and goats off of the putting surface)



VIEW FROM GOLF LINKS

v) 'View from Golf Links' - Looking up to the Idalia mansion (prior to this mansion being used as a Clubhouse, at a later date)





PORT HOPE GOLF & COUNTRY CLUB 2021 SCORECARD

Yardages from GPS data provided by Turf Care.

Golf Course Layout Drawing reviewed and revised by Miller Golf Design.

February 11, 2021

Hole	Par	Hole Length - YD			
		BLUE	WHITE	YELLOW	RED
1	3	185	175	134	130
2	4	436	424	407	396
3	4	383	358	275	240
4	5	530	491	426	386
5	4	331	311	286	258
6	3	215	189	167	112
7	3	140	124	120	104
8	4	457	390	323	235
9	4	370	267	239	174
TOTAL 1 - 9	34	3047	2729	2377	2035
10	4	388	378	324	276
11	3	205	172	129	77
12	5	548	514	470	410
13	4	428	411	380	341
14	5	473	405	372	257
15	4	333	318	270	230
16	3	197	163	140	113
17	4	339	296	282	255
18	4 / 5	BLUE / YELLOW 427	410	YELLOW FORWARD 295	259
TOTAL 9 - 18	36 / 37	3338	3067	2662	2218
TOTAL	70 / 71	6385	5796	5039	4253



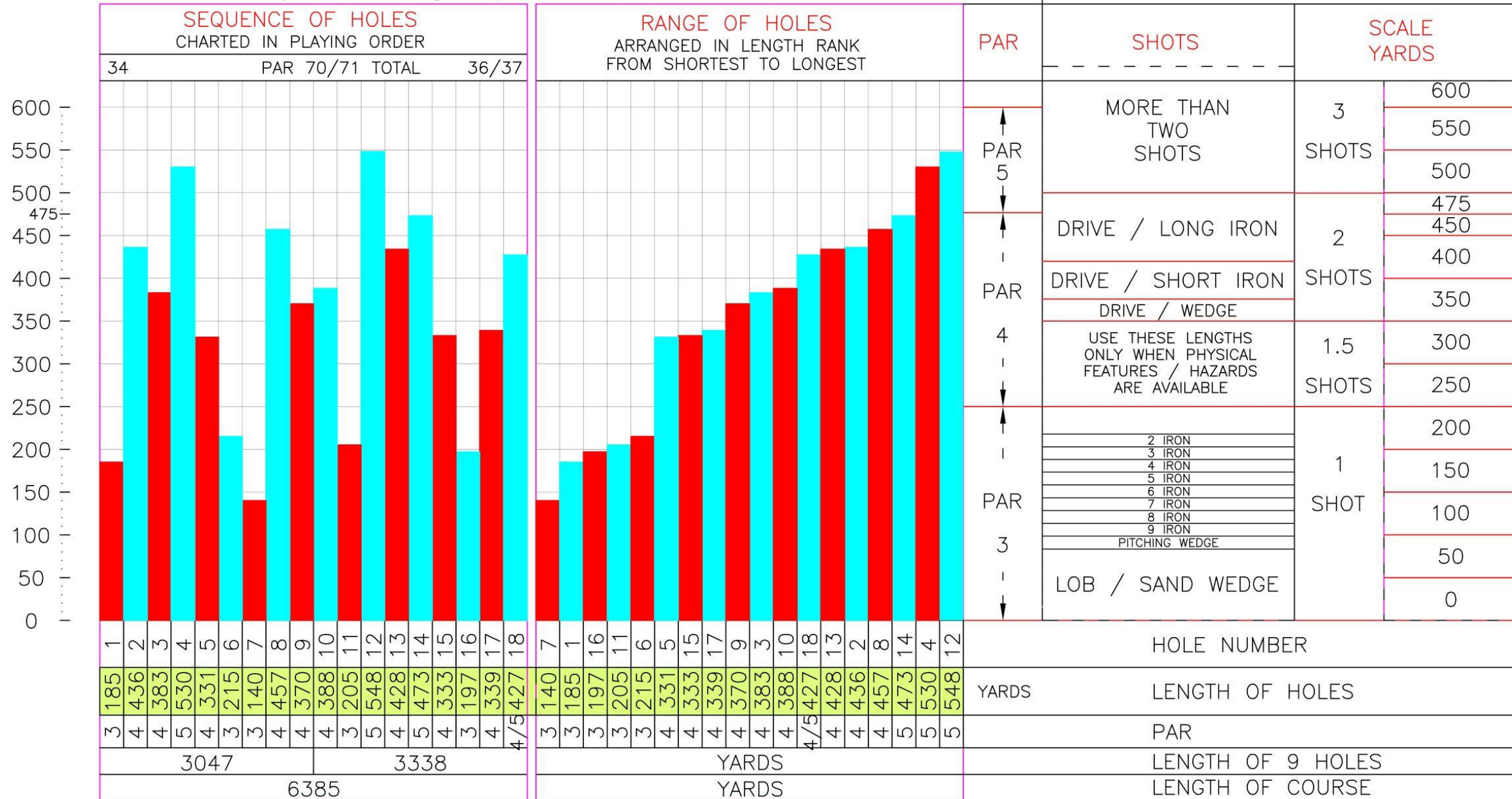
Miller Golf Design Group
103 WILCOX DRIVE
P.O. BOX 308, CLARKSBURG
TOWN OF THE BLUE MOUNTAINS
N0H 1J0
519-599-6336

PORT HOPE Golf & Country Club

PROPOSED GOLF COURSE ROUTING PLAN SHOT ANALYSIS

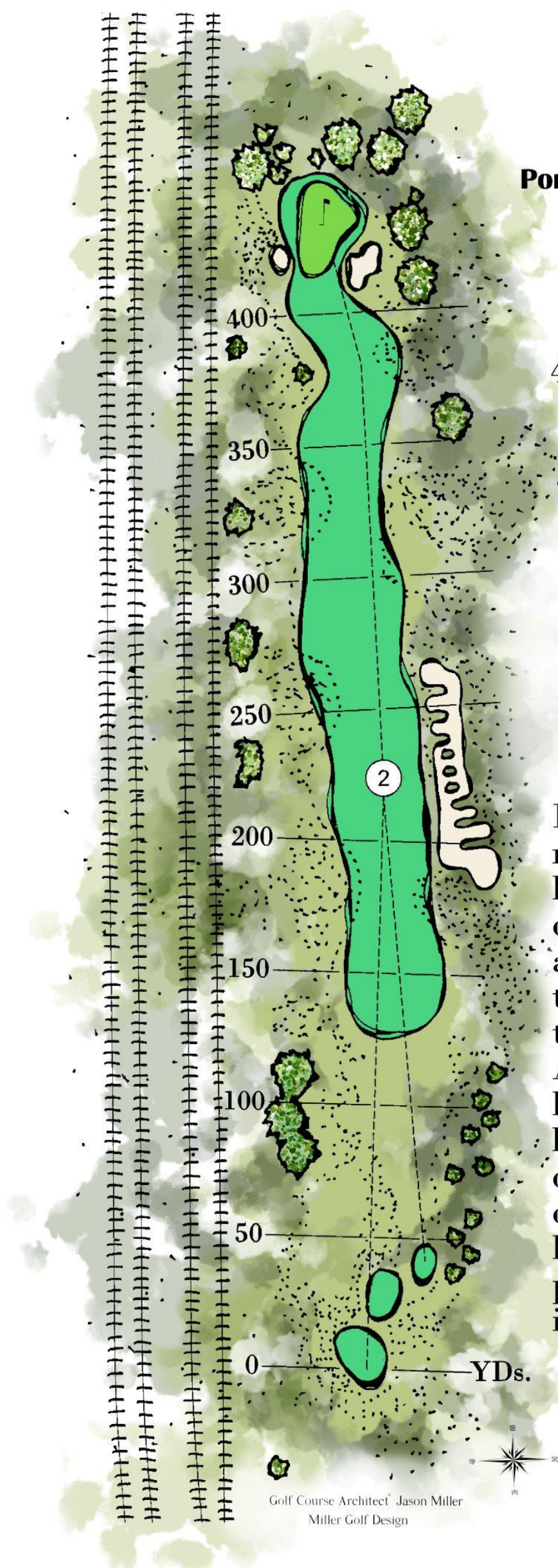
By : Miller Golf Design Group

Architect : Jason Miller



■ HOLE LENGTH
■ HOLE LENGTH

February 18, 2021



Port Hope Golf & Country Club

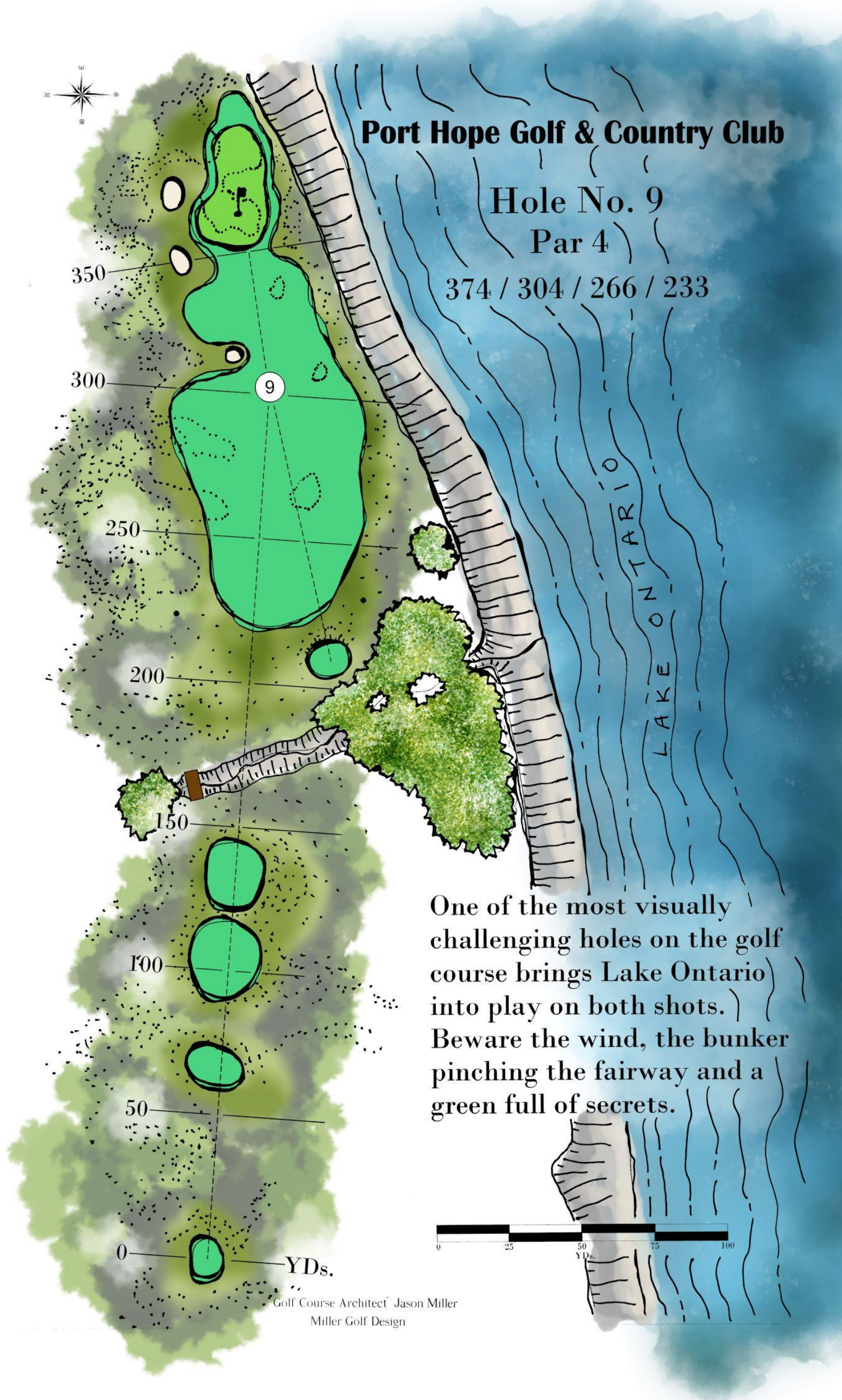
Hole No. 2

Par 4

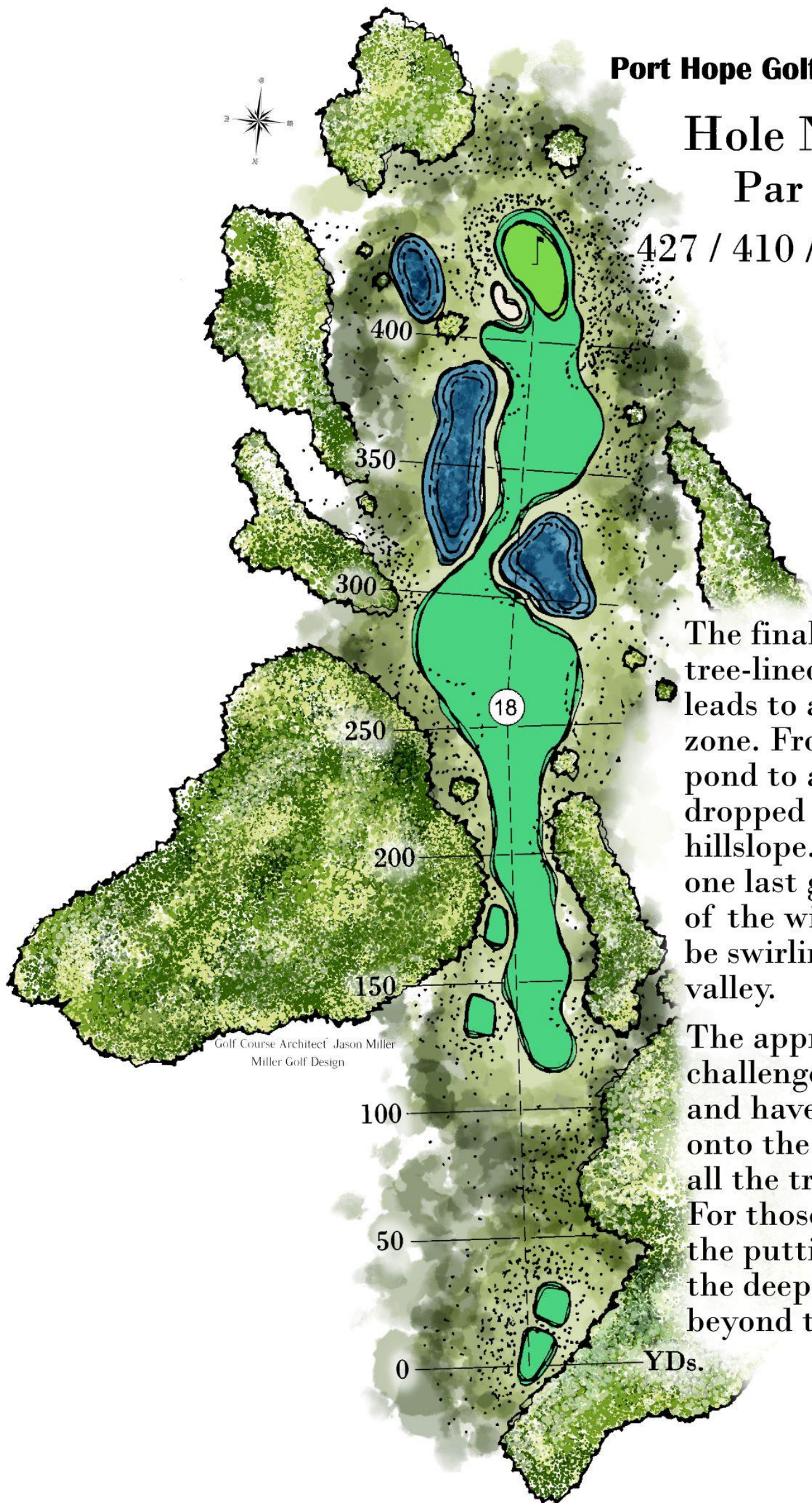
436 / 424 / 407 / 396

Playing parallel to the railroad tracks harkens back to a different era; one of romance and adventure, where golfers travelled by rail to the early clubs. A church-pew style bunker guards the landing zone, demanding accuracy off the tee. Framed by bunkers also from a time past, this greensite is inviting if nothing else.





One of the most visually challenging holes on the golf course brings Lake Ontario into play on both shots. Beware the wind, the bunker pinching the fairway and a green full of secrets.



Port Hope Golf & Country Club

Hole No. 18

Par 4 / 5

427 / 410 / 295 / 259

Golf Course Architect Jason Miller
Miller Golf Design

The final drive must find the tree-lined fairway chute that leads to a wide-open landing zone. From here, you carry the pond to a raised green, back dropped by an enormous hillslope. Lake Ontario allows one last glimpse to warn you of the winds that may be swirling at the end of this valley.

The approach is a thrilling challenge: play to the right and have the slope feed the ball onto the green, thus avoiding all the troubles to the left. For those who can carry onto the putting surface, beware the deep swale that lies hidden beyond the green.



Port Hope Golf & Country Club: Hole No. 1 (from Blue / White Tees)



Port Hope Golf & Country Club: Hole No. 1 (from Yellow / Red Tees)



Port Hope Golf & Country Club: Hole No. 1 – Green Expansion to Original Size



Port Hope Golf & Country Club: Hole No. 1 - Green



Port Hope Golf & Country Club: Holes No. 2 & 13 – Church-Pew Style Bunker



Port Hope Golf & Country Club: Hole No. 3



Railroad Tracks and Bridge



Railroad Traffic



Port Hope Golf & Country Club: Original Farmland (Now Holes No. 4 – 10)



Port Hope Golf & Country Club: Original Farmland (Now Holes No. 4 – 10)



Port Hope Golf & Country Club: Hole No. 4 Under Construction



Port Hope Golf & Country Club: Hole No. 4 (from Bridge)



Port Hope Golf & Country Club: Hole No. 4



Port Hope Golf & Country Club: Hole No. 5



Port Hope Golf & Country Club: Hole No. 5



Port Hope Golf & Country Club: Hole No 9 (Blue Tee)



Port Hope Golf & Country Club: Hole No. 9



Port Hope Golf & Country Club: Hole No 9 (Yellow Tee)



Port Hope Golf & Country Club: Hole No. 9 Along the Cliffs



Port Hope Golf & Country Club: Hole No. 9 (Blue Tee)



Port Hope Golf & Country Club: Hole No. 10 (from Bridge)



Port Hope Golf & Country Club: Hole No. 10 with Bridge in Background



Port Hope Golf & Country Club: Hole No. 8 Green



Port Hope Golf & Country Club: Hole No. 4 (right) / 6 & 7



Port Hope Golf & Country Club: View of Hole No. 7 and parts of Holes No. 6 & 8



View of Port Hope Golf & Country Club from Lake Ontario



Port Hope Golf & Country Club: Hole No. 9 / 10



Port Hope Golf & Country Club: Hole No. 9 Green (right) / Hole No. 10



Port Hope Golf & Country Club: Hole No. 12 – Green Site



Port Hope Golf & Country Club: Hole No. 13 - Original



Port Hope Golf & Country Club: Hole No. 13 – New Green Site



Port Hope Golf & Country Club: Hole No. 16 – Original Green Site



Port Hope Golf & Country Club: Hole No. 17 (from new tees)



Port Hope Golf & Country Club: Hole No. 17 Greensite



Port Hope Golf & Country Club: Hole No. 18 Prior to Re-Modeling Project



Port Hope Golf & Country Club: Hole No. 18 Prior to Re-Modelling Project



Port Hope Golf & Country Club: Hole No. 18 During Construction



Port Hope Golf & Country Club: Hole No. 18 Under Construction



Port Hope Golf & Country Club: Hole No. 18 During Grow-In



Port Hope Golf & Country Club: Hole No. 18 During Grow-In



Port Hope Golf & Country Club: Hole No. 18 During Grow-in



Port Hope Golf & Country Club: Hole No. 18



Port Hope Golf & Country Club: New Putting Green



Port Hope Golf & Country Club: Putting Green



Port Hope Golf & Country Club: Penryn Park Mansion